

ISCOM2600G(-PWR) series switch

L2+ Gigabit Access Switch

The ISCOM2600G(-PWR) series switches, promoted by Raisecom, is the new-generation and cost-effective Layer 2 Gigabit Ethernet switches. It adopts a route switching software platform based on the Linux OS, and a high-performance hardware platform. With multiple interface types, such as ISCOM2608G-2GE, ISCOM2624G-4GE, ISCOM2624G-4C, ISCOM2648G-4GE, ISCOM2648G-4C, ISCOM2608G-2GE-PWR, and ISCOM2624G-4GE-PWR, it can provide flexible networking modes.

Featuring high reliability, high access security guarantee, easy administration, and simple management, it can meet carriers' requirements. In addition, it supports static route, ready IPv6, intelligent PoE, and so on. Therefore, it is widely adopted, such as campus network access.



ISCOM2600G(-PWR) Series

Highlights >>

High density

1U standard chassis, with a switching capacity of 176 Gbit/s.

Downlink interfaces: 8/24/48 10/100/1000 Base-T electrical interfaces.

Uplink interfaces: 2/4 1000 Mbit/s Combo interfaces or 4 10 Gbit/s SFP+ interfaces.

High reliability

Support STP, RSTP, and MSTP. RSTP and MSTP can implement millisecond-level protection switching and ensure network reliability. In addition, ISCOM2600G series support multi-process RSTP (MRSTP). The MSTP topology computation can be conducted independently in different process, which reduces the impact on the network caused by single device failure and facilitates capacity expansion and independent management on interfaces.

Support LACP and MLACP.

Support Ethernet Ring Protection Switching (ERPS), which complies with the ITU-T G.8032 standard. Provide a fault switching time less than 50ms.

Support loop detection to avoid access loops at the user side.

Support dual-system and dual-configuration-file redundancy backup.

Various security guarantees

Support IEEE802.1x-based interface authentication and MAC authentication, which implements the dynamic distribution of VLAN user policies.

Support various AAA modes, such as RADIUS and TACACS+.

Support port secure MAC and MAC address limit to prevent attacks from illegal users.

Support various ACL policies to control packet forwarding flexibly.

Support DHCPv4/v6 Snooping and Option 82/18/37 to avoid DHCP attacks.

Support DAI and IP Source Guard to prevent ARP flooding attacks and IP attacks.

Support broadcast storm to ensure the stability of the network.

Support lightning protection for the power supply and all Ethernet electrical interfaces, and reduce hardware investment for customers.

Individualized QoS

Support complex traffic classification. Support classifying traffic according to the customized fields in the packet.

Support rich scheduling policies, such as SP, WRR, SP+WRR, DRR, and SP+DRR.

Support a flow-based dual-rate three-color CAR and HCAR.

International Headquarters

East-11, Raisecom Building, No.10 Xibeiwang East Road,
Haidian District, Beijing. 100094, China

Tel: +86 10 8288 3305

Fax: +86 10 8288 3056

www.raisecom.com

U.S.A. Headquarters

3031 north Rocky point Drive West Harborview
Building, Suite 100 Tampa Florida. 33607. USA.

Tel: +1 888 816 4808 ext 201

Fax: +1 727 547 9124

Email: ussales@raisecomusa.com

Raisecom Technology Co., Ltd.

Copyright@1999-2014

All rights reserved

Technical information is subjected to
change without notice

Support statistics based on traffic.

IPv6 Ready

Meet the requirement of IPv6 networking and support IPv6 remote management through Telnet or SNMP.

Support IPv6 ACL, DHCPv6 Snooping, RA Snooping, and Option18/37 to ensure the network security.

Support MLD Snooping to ensure the IPv6 multicast monitoring.

Smart PoE

Support powering the Powered Devices (PD) through the downlink interfaces, which complies with the IEEE802.3af/IEEE802.3at standard. Support controlling the PDs intelligently. First, it supports PD alive-check. Once the PD stops working and responding, the ISCOM2600G will resume the PoE interface power and bring the PD back to work. It will greatly enhance the network reliability by resetting the PD's power source through the PoE port, which reduces administrator management burden. Second, it supports automatically reboot the PD at a specific time each week. Therefore, it will reduce the chance of IP camera or AP crash resulted from buffer flow. Third, it supports supplying power during specified time intervals. On one hand, PD can stop working during non-business hours to increase life span for PD and security for SMBs. On the other hand, it is a powerful function to help SMBs save power. In addition, it also supports monitoring the power supply status, power, current, voltage, etc. and supports sending Trap messages, when PDs are unusual.

Advanced management system

Support SNMP, RMON, Telnet, SSH.

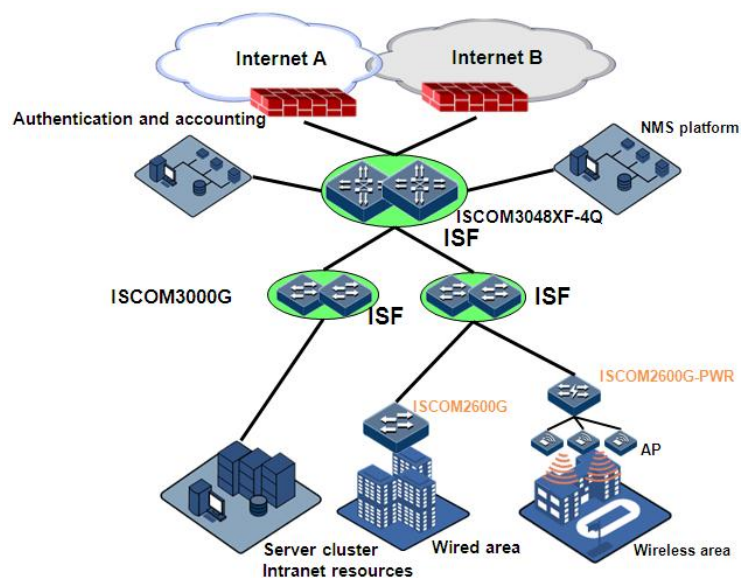
Support friendly WEB management to increase the usability of the device.*

Support automatic configuration and loading. The administrator can put the configuration file set in advance to the FTP/TFTP server for the automatic loading of the switch while it is booting, thus simplifying the management and maintenance.

Application >>

Campus networking

The ISCOM2600G series, ISCOM3000G(B) series, and ISCOM3000X series working together can provide a solution for large and medium-sized campus network. The ISCOM2600G(-PWR) serves as an access switch, providing 1000 Mbit/s data access. It also provides 10 GE interfaces, delivering high bandwidth for the access device. The Gigabit PoE devices can monitor PDs through the intelligent PoE feature.



International Headquarters

East-11, Raisecom Building, No.10 Xibeiwang East Road,
Haidian District, Beijing. 100094, China

Tel: +86 10 8288 3305

Fax: +86 10 8288 3056

www.raisecom.com

U.S.A. Headquarters

3031 north Rocky point Drive West Harborview
Building, Suite 100 Tampa Florida. 33607. USA.

Tel: +1 888 816 4808 ext 201

Fax: +1 727 547 9124

Email: ussales@raisecomusa.com

Raisecom Technology Co., Ltd.

Copyright@1999-2014

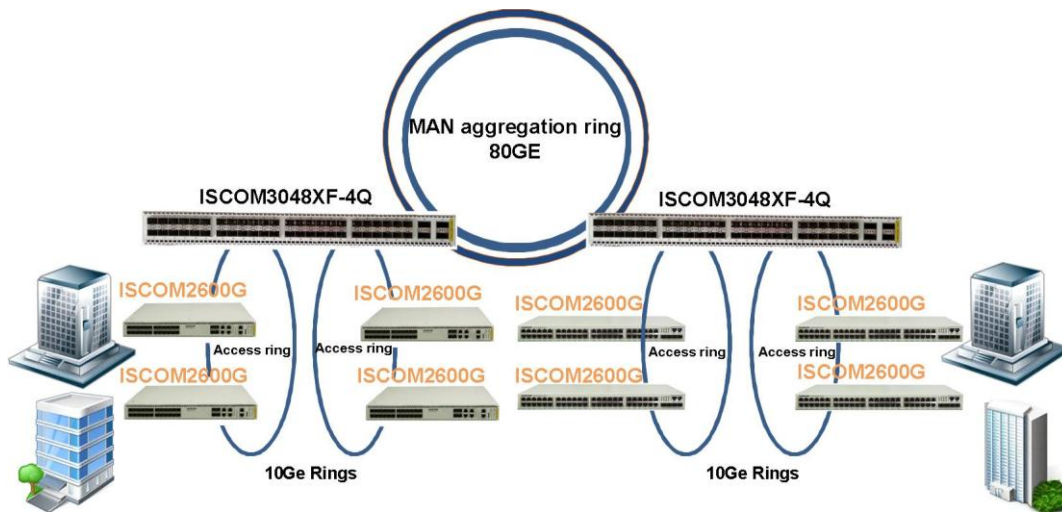
All rights reserved

Technical information is subjected to
change without notice



MAN networking

The ISCOM2600G and ISCOM3000X together can provide a MAN access/aggregation solution. The ISCOM2600G serves as the access device, providing 48 GE interfaces in the downlink for high-density access and forming a 10 Gbit/s MAN access ring. Multiple access rings are connected to the downlink 10 Gbit/s interfaces on the ISCOM3000X switches. The ISCOM3000X switches form an 80 GE aggregation ring through the 40G*2 interfaces. In this cascaded ring network, the reliability of the access/aggregation devices is ensured. As a result, users are provided with high bandwidth and high reliability services.



Key Features >>

Device	ISCOM2608G-2GE(-P WR)	ISCOM264G-4GE(-P WR)	ISCOM2624G-4C	ISCOM2648G-4GE	ISCOM2648G-4C
Port type	Uplink: 2xGE Combo Downlink: 8xGE RJ45	Uplink: 4xGE Combo Downlink: 24xGE RJ45	Uplink: 4x10G SFP+ Downlink: 24xGE RJ45	Uplink: 4xGE Combo Downlink: 48xGE RJ45	Uplink: 4x10G SFP+ Downlink: 48xGE RJ45
Management interface	1 Console interface, 1 out-of-band interface				
Switching capacity (Gbit/s)	20	56	128	104	176
Packet forwarding rate (Mpps)	14.88	41.66	95.23	77.38	130.94
Dimensions (mm)	260 × 130 × 43.6 PoE: 300 × 220 × 43.6	440 × 220 × 43.6 PoE: 440 × 300 × 43.6	440 × 220 × 43.6	440 × 300 × 43.6	440 × 300 × 43.6
Weight (kg)	1.08 PoE: 2.5	2.6 PoE: 4.95	2.6	4.3	4.4

International Headquarters

East-11, Raisecom Building, No.10 Xibeiwang East Road, Haidian District, Beijing. 100094, China

Tel: +86 10 8288 3305

Fax: +86 10 8288 3056

www.raisecom.com

U.S.A. Headquarters

3031 north Rocky point Drive West Harborview Building, Suite 100 Tampa Florida. 33607. USA.

Tel: +1 888 816 4808 ext 201

Fax: +1 727 547 9124

Email: ussales@raisecomusa.com

Raisecom Technology Co., Ltd.

Copyright@1999-2014

All rights reserved

Technical information is subjected to change without notice



MAX Power consumption (W)	15	25	25	45	45
	PoE: 150	PoE: 440			
anti-thunder (power)	AC: 6kv/6kv, DC: 1kv/2kv PoE: DC: 2kv/4kv	AC: 6kv/6kv, DC: 1kv/2kv PoE: DC: 2kv/4kv	AC: 6kv/6kv, DC: 1kv/2kv	AC: 1kv/2kv, DC: 1kv/2kv	AC: 1kv/2kv, DC: 1kv/2kv
Hardware	<ul style="list-style-type: none"> ● Power: single AC/DC (except ISCOM2648G-4C: single or dual power, AC/DC/AC-D/DC-D) ● Fan: no fan design (except ISCOM2648G-4C and PoE) ● Working temperature: 0–50°C ● Relevant humidity: 10%–90% RH (non-condensing) ● Voltage range: AC 220V(100~240V), DC 48V(-36~-72V) ● anti-thunder (cable port): 6kv 				
Packet forwarding	<ul style="list-style-type: none"> ● MTU (9K) ● DLF control 				
MAC	<ul style="list-style-type: none"> ● MAC address table (16K), static MAC address table (1024) ● Blackhole MAC address ● MAC addresses limits based on the interface ● Port security MAC 				
VLAN	<ul style="list-style-type: none"> ● Dot1Q (4094 VLANs) ● Basic QinQ, flexible QinQ, protocol-based VLAN ● VLAN mapping (1:1, inner and outer VLAN mapping) 				
L2 multicast	<ul style="list-style-type: none"> ● L2 multicast table (512) ● IGMPv1, v2, v3 protocol ● IGMP Snooping, MVR, IGMP VLAN copy* ● IGMP Proxy ● IGMP Filter 				
ACL	<ul style="list-style-type: none"> ● MAC ACL (400), IP ACL (400), IPv6 ACL (128) ● User defined ACL (128) ● ACL combination based on VLAN/CoS/MAC/EtherType/IPv4/IPv6/L4 protocol 				
QoS	<ul style="list-style-type: none"> ● Trust mode: port-priority/CoS/ DSCP/ ToS ● Priority mapping: cos-mapping/dscp-mapping/tos-mapping/dscp-mutation-mapping/cos-remark-mapping ● Scheduling (8 queue/port): SP/WRR/SP+WRR/DRR/SP+DRR ● Congestion control: Tail Drop/RED ● Policy (action: marking, mirror, statistic, policer) ● Shaping: per port/queue ● Bandwidth guarantee: CIR/CBS/EIR/EBS, MEF/RFC 4115, color aware ● CAR: based on ingress (128) ● HCAR: based on ingress (128) ● Performance statistic: based on ingress (64) 				

International Headquarters

East-11, Raisecom Building, No.10 Xibeiwang East Road,
Haidian District, Beijing. 100094, China

Tel: +86 10 8288 3305

Fax: +86 10 8288 3056

www.raisecom.com

U.S.A. Headquarters

3031 north Rocky point Drive West Harborview
Building, Suite 100 Tampa Florida. 33607. USA.

Tel: +1 888 816 4808 ext 201

Fax: +1 727 547 9124

Email: ussales@raisecomusa.com

Raisecom Technology Co., Ltd.

Copyright@1999-2014

All rights reserved

Technical information is subjected to
change without notice



Security

- AAA: user, DOT1X (based on port or MAC), RADIUS, TACAS+
- PPPOE+
- DAI and IPSG based on DHCP binding table
- Storm control: broadcast, multicast, DLF

Reliability

- LACP (max groups = port number/2,max member = down link number)
- STP/RSTP/MSTP(64 instance), MRSTP(Multi-process RSTP)
- Port backup
- Port protection
- Loop detection
- G.8032 v1/v2 (32 rings*, < 50ms)

IPv4

- Vlanif (16)
- Vlanif IPv4 address (1 master,1 slave)
- ARP IPV4 (1K), static ARP IPV4 (256)
- DHCP Server, DHCP Relay, DHCP Client, DHCP Snooping, DHCP Option(61, 82, 43)
- Proxy ARP

IPv6

- ARP IPV6 (512), static ARP IPV6 (128)
- NDP
- RA Snooping
- DHCPv6 Option (18,37)
- MLD Snooping/Proxy/Filter
- IPV6 management: Telnet(10 sessions), SSH(10 sessions), TFTP/FTP, SNTP/NTP, SNMP, and RADIUS

Route v4/v6

- IPv4 static/default routing (64)
- IPv6 static/default routing (32)

OAM

- IEEE802.3ah EFM
- IEEE802.1ag CFM*
- L2 loopback (swap MAC)
- IPv4/v6 Ping/Traceroute

Smart PoE

- downlink ports of IEEE802.3af/IEEE802.3at devices power
- per port PoE function enable/disable
- PD alive check
- automatically reboot PD
- PoE schedule for energy saving
- PoE usage monitoring

System

management

- Console CLI, SNMPv1/v2/v3, telnet (10 sessions), SSHv1/v2 (10 sessions), WEB*.
- RMON
- LLDP
- DDM
- Alarm management, syslog management
- Automatic configuration
- Mirror (based on port or flow, 2 groups)

International Headquarters

East-11, Raisecom Building, No.10 Xibeiwang East Road,
Haidian District, Beijing. 100094, China

Tel: +86 10 8288 3305

Fax: +86 10 8288 3056

www.raisecom.com

U.S.A. Headquarters

3031 north Rocky point Drive West Harborview
Building, Suite 100 Tampa Florida. 33607. USA.

Tel: +1 888 816 4808 ext 201

Fax: +1 727 547 9124

Email: ussales@raisecomusa.com

Raisecom Technology Co., Ltd.

Copyright@1999-2014

All rights reserved

Technical information is subjected to
change without notice



- RSPAN
- Backup system

*roadmap

Ordering Information >>

ISCOM2608G-2GE-AC/DC	8x10/100/1000BASE-T + 2xCOMBO (100/1000BASE-X or10/100/1000BASE-T), single AC/DC power.
ISCOM2624G-4GE-AC/DC	24x10/100/1000BASE-T + 4xCOMBO (100/1000BASE-X or10/100/1000BASE-T), single AC/DC power.
ISCOM2648G-4GE-AC/DC	48x10/100/1000BASE-T + 4xCOMBO (100/1000BASE-X or10/100/1000BASE-T), single AC/DC power.
ISCOM2624G-4C-AC/DC	24x10/100/1000BASE-T + 4x1000M/10G SFP+, single AC/DC power.
ISCOM2648G-4C-AC/DC(-D)	48x10/100/1000BASE-T + 4x1000M/10G SFP+, single AC/DC power or dual AC/DC power.
ISCOM2608G-2GE-PWR-AC/DC	8x10/100/1000BASE-T PoE ports (PSE) + 2xCOMBO (100/1000BASE-X or10/100/1000BASE-T), single AC/DC power.
ISCOM2624G-4GE-PWR-AC/DC	24x10/100/1000BASE-T PoE ports (PSE) + 4xCOMBO (100/1000BASE-X or10/100/1000BASE-T), single AC/DC power.

International Headquarters

East-11, Raisecom Building, No.10 Xibeiwang East Road,
Haidian District, Beijing. 100094, China

Tel: +86 10 8288 3305

Fax: +86 10 8288 3056

www.raisecom.com

U.S.A. Headquarters

3031 north Rocky point Drive West Harborview
Building, Suite 100 Tampa Florida. 33607. USA.

Tel: +1 888 816 4808 ext 201

Fax: +1 727 547 9124

Email: ussales@raisecomusa.com

Raisecom Technology Co., Ltd.

Copyright@1999-2014

All rights reserved

Technical information is subjected to
change without notice