

MSG2200 Series Enterprise Gateway

By integrating routers, switches, firewalls, VPN, and WLAN in one single device, MSG2200 Series Enterprise Gateway is simple to use and manage for SMEs (small and medium businesses) and enterprise small branch offices. The gateway provides the performance required for concurrent services, including firewall, content filtering, encryption for VPNs, IEEE 802.11g/n for mobility, and quality-of-service (QoS) features for optimizing voice and video applications at broadband speeds. Easy deployment and centralized management features help enable enterprises or service providers to deploy the Raisecom MSG2200 Series Enterprise Gateway, and greatly reduce both the equipment and management cost.



MSG2200 Series Enterprise Gateway

Highlights

- | | |
|-------------------------------|--|
| Connection Flexibility | Flexible WAN connections: dual 10/100/1000BASE-T Gigabit or dual Gigabit fiber SFP Ethernet WAN Ports, one 10/100/1000BASE-T Gigabit Ethernet and one Gigabit Ethernet optical port for additional SFP for WAN connectivity, one EPON or one GPON for WAN connectivity, 3G Wireless (WCDMA/EVDO) uplink or backup. |
| Service Assurance | Support IEEE802.1q, 802.1p and TOS/Diff-serv |
| Integrated Network | Support Routing, NAT/NAPT, DHCP, DNS/DDNS, IEEE802.11 b/g/n, PPPoE |
| Advanced Security | Support VPN, Firewall, Content filtering, Anti-DoS, Anti-ARP |
| Easy Management | Management via Web management, TRo69, SNMP, Telnet, CLI |

Typical Application

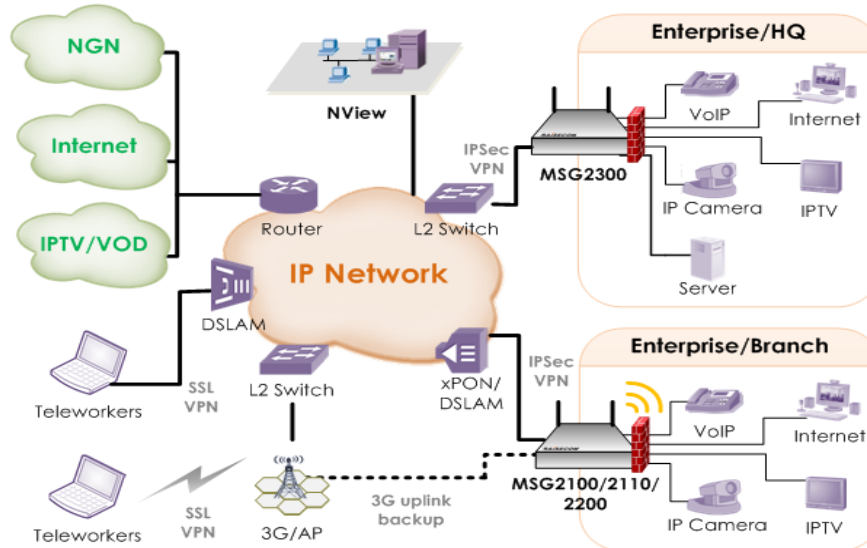


Figure.1 SME VPN Interconnections

Features

IP features

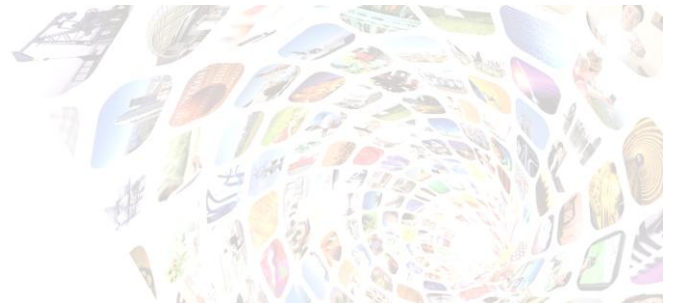
- Routing capability - Static & Dynamic routing (RIPv1/v2), OSPF
- Generic routing encapsulation (GRE)
- Network Address Translation (NAT)/NAPT
- IGMP Proxy/Snooping
- Dynamic Host Configuration Protocol (DHCP) server, relay, and client
- Domain Name System (DNS) Client, Proxy
- Dynamic Domain Name System (DDNS)
- Access control lists (ACLs)
- Supports Ipv6
- Supports PPPoE

Switch features

- Auto Media Device In/Media Device Cross Over (MDI-MDX)
- Storm Control
- MAC filtering

Security features

- Layer 2 Tunneling Protocol (L2TP)
- Secure Sockets Layer (SSL) VPN for secure remote access, SSL 2.0/SSL3.0/TLS1.0
- Maximum of up to 100 IPsec VPN Tunnels
- Hardware-accelerated DES, 3DES, AES 128, AES 192, and AES 256
- Authentication (SHA-1, MD5)
- Manual Key, IKE, PKI (X.509)



Zone-based policy firewall:
 Stateful inspection transparent firewall
 Dynamic and static port security
 Advanced application inspection and control
 Content filtering
 ACLs
 Anti-DoS
 Anti-ARP

WLAN features
 Automatic rate selection for 802.11g
 2 x 2 MIMO radio operation
 Autonomous or unified access point
 Software-configurable transmit power
 Static and dynamic Wired Equivalent Privacy (WEP)
 WPA /AES/TKIP
 MAC authentication and filter

QoS
 IEEE 802.1P
 ToS/Diff-Serv
 Scheduling algorithm:
 SP,WRR,SP+WR

USB features
 One USB 2.0 port for booting, and loading configuration
 One for 3G Wireless backup or primary

Management features
 Web management
 TRo69
 Telnet
 SNMPv1/v2/v3
 CLI

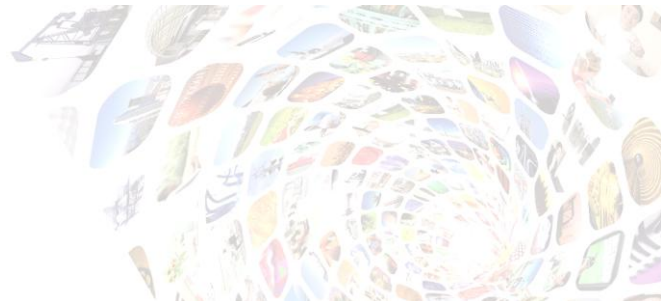
High-availability features
 3G Wireless backup (3G models only)

Specifications

WAN interface	1*10/100/1000Base-T and 1 GE optical port for additional SFP interface 1*EVDO/WCDMA Wireless backup or primary
LAN interface	8*10/100M auto-negotiation RJ45 connector
Wlan interface	2*IEEE 802.11b/g/n
Serial port	9600bps/8bit/none parity/1

Compliances

Standards & protocols	IEEE802.3-2002 IEEE802.3ah-2004 IEEE802.3 10BaseT IEEE802.3u 100BaseTX IEEE802.3ab 1000BaseT IEEE802.3z 1000BaseX IEEE802.1w IEEE802.3ad IEEE802.3x full duplex on
----------------------------------	--



configuration	stop bit/none flow control	10BaseT, 100BaseTX, and
Dimension	230*160*44.2mm (W*D*H)	1000BaseT ports
Weight	< 2kg	IEEE802.1q-2003
Power supply	AC Power supply: 100V~240VAC	IEEE802.1p
Power consumption	≤ 15W (at max load)	IEEE802.11b
Working environment	Temp: 0 ~ 45 Celsius RH:10 ~ 90% non-condensing	IEEE802.11g
		IEEE802.11n
		TRo6g

Ordering Information

MSG2200-GEGF-AC	1*10/100/1000Base-T and one GE optical port for additional SFP uplink, 2*USB2.0 , 1*EVDO/WCDMA backup or primary, 8*10/100Base-T, 1*WLAN(IEEE802.11b/g/n), 100~240VAC, 50/60Hz.
MSG2200-2GE-AC	2*10/100/1000Base-T uplink, 2*USB2.0 , 1*EVDO/WCDMA backup or primary, 8*10/100Base-T, 1*WLAN(IEEE802.11b/g/n),100~240VAC, 50/60Hz.
MSG2200-2GF-AC	2*GE optical port for additional SFP uplink, 2*USB2.0 , 1*EVDO/WCDMA backup or primary, 8*10/100Base-T, 1*WLAN(IEEE802.11b/g/n), 100~240VAC, 50/60Hz
MSG2200-EPON-AC	1*EPON optical port uplink, 2*USB2.0 , 1*EVDO/WCDMA backup or primary, 8*10/100Base-T, 1*WLAN(IEEE802.11b/g/n), 100~240VAC, 50/60Hz.