

PD1104Z2-E

4 Mp intelligent IP outdoor PTZ camera 36x zoom

Quick Start Guide v1.0



Find more information and documentation on <https://siqura.com>

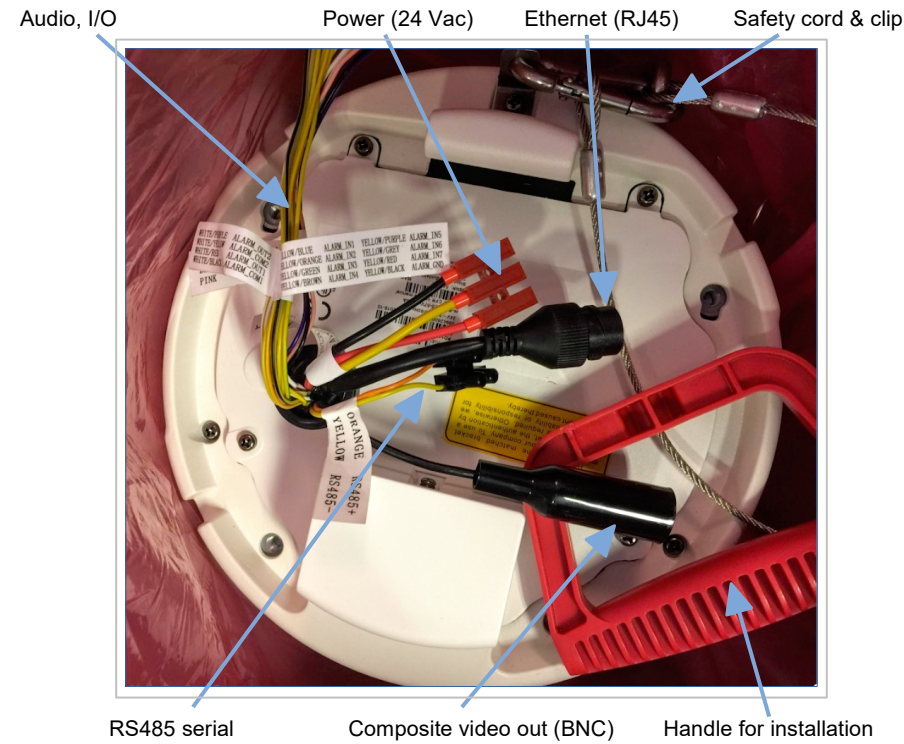


SIQURA

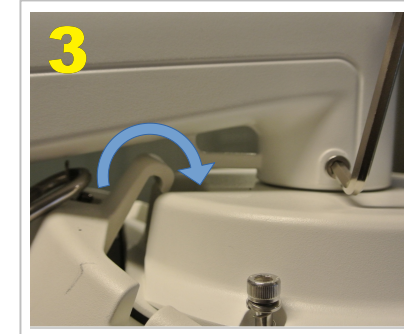
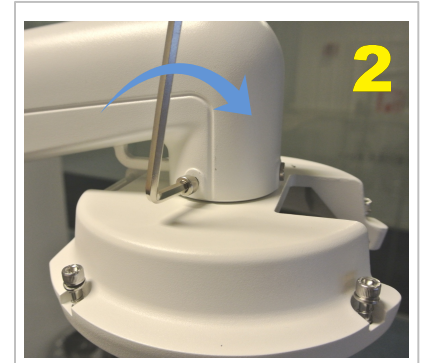
Unpack



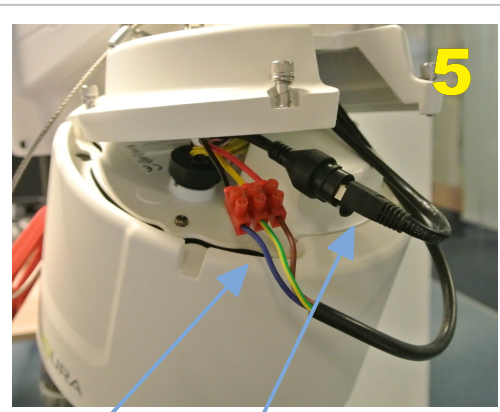
Connections



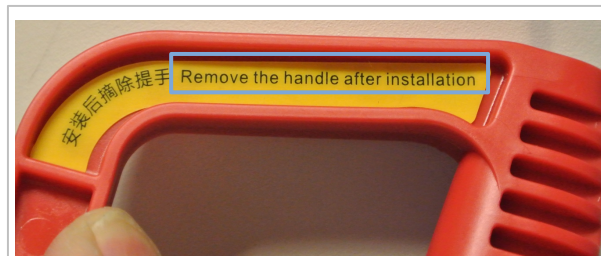
Mounting



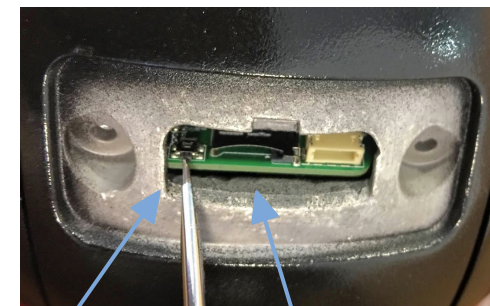
Connect and close



Power (24 Vac) Ethernet (RJ45)



Reset button & microSD



Remove screws

Reset button

microSD-card

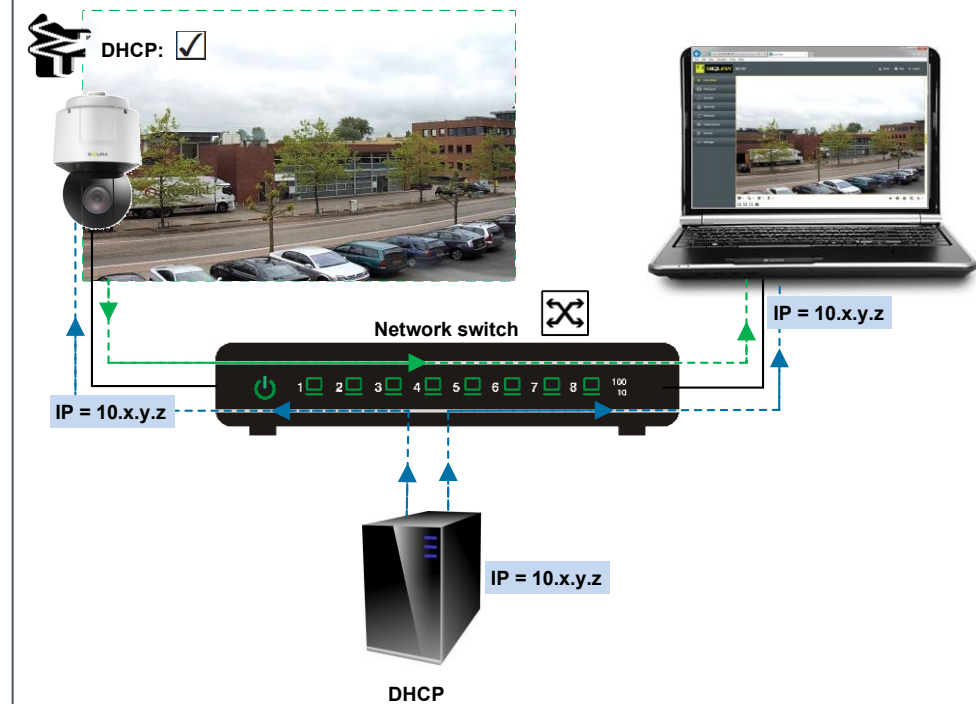


MICRO SD CARD:
IT IS NOT RECOMMENDED TO CONTINUOUSLY (24/7) RECORD WITH THE MICRO SD CARD, AS THE CAMERA MAY NOT SUPPORT LONG-TERM CONTINUOUS DATA READ/WRITE. CONTACT THE MANUFACTURER OF THE MICRO SD CARD FOR INFORMATION REGARDING THE RELIABILITY AND THE LIFE

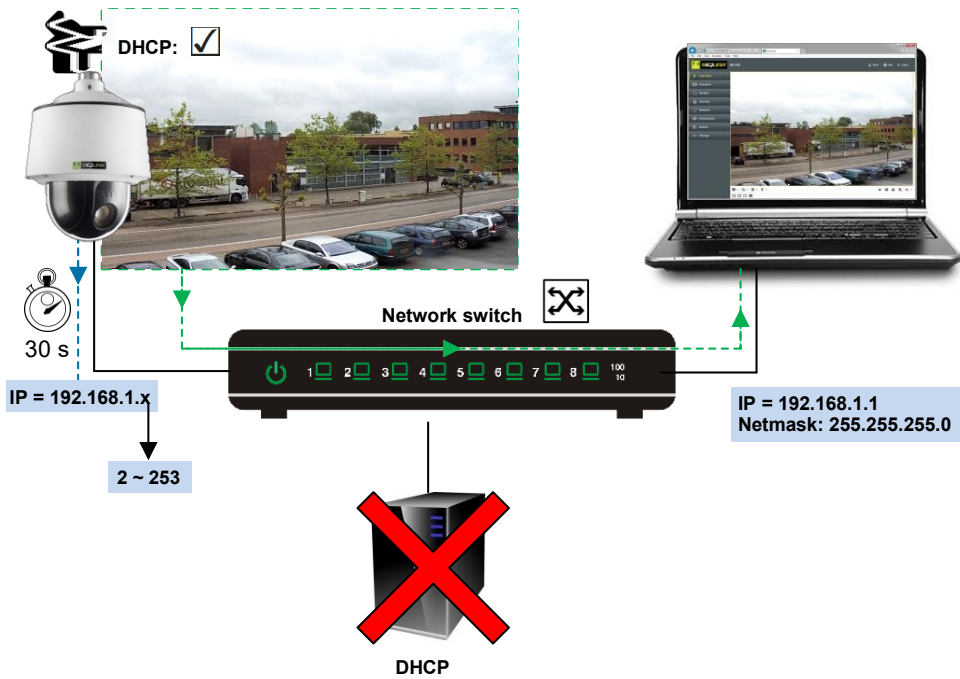


RESET BUTTON: PRESS AND HOLD FOR 10 SEC. WHEN POWERING ON OR REBOOTING.
WARNING: RESTORES FACTORY DEFAULT SETTINGS, INCLUDING IP ADDRESS, USER NAME AND PASSWORD.

Use DHCP server



Use fixed IP address



Use Device Manager (see next) to discover the camera on the network.

Auto-discover with Siqura Device Manager

1
siqura.com/downloads/software
SDM2-vx.xx-setup.zip
2
3

Set administrator password

Administrator / End User

qwerty1234



x6W@oM0a!9#F



Set a strong password!

Open web interface & install web services



Change IP-address

View live video and embedded user manual



For more Information
<http://siqura.com>