

PD900

3MP Network PTZ Dome with 30x zoom

Quick Start Guide



Find additional manuals, the datasheet, the EU Declaration of Conformity, and the latest firmware for this product at:

<https://tkhsecurity.com/>



Unpack



PD900 Camera Unit

- M4 security screw with rubber
- 2-pin power terminal block(DC12V use)
- 3-pin power terminal block (AC24V use)
- 14-pin Alarm/Audio I/O terminal block
- Security Torx
- Quick Start Guide
- 1.5" threaded tube adapter
- Rubber Stopper

Note 1: Subject to modification. Actual product and accessories may differ in appearance.

Installation Notices



CAUTION:
 INSTALLATION SHALL BE PERFORMED BY QUALIFIED PERSONNEL ONLY. INSTALLATION SHALL BE IN ACCORDANCE WITH LOCAL PROCEDURES. IF YOU USE AN EXTERNAL POWER SUPPLY, CONTACT SIQURA TO MAKE SURE THAT THE POWER SUPPLY HAS THE PROPER POWER SPECIFICATIONS. BATTERY REPLACEMENT SHALL NOT BE APPLIED IN VIEW OF THE RISK OF EXPLOSION. LE REMPLACEMENT DES PILES NE DOIT PAS ÊTRE APPLIQUÉ AU RISQUE D'EXPLOSION. DISPOSE OF USED BATTERIES ACCORDING TO THE INSTRUCTIONS. METTRE AU REBUT LES BATTERIES USAGÉES CONFORMÉMENT AUX INSTRUCTIONS.
 MAKE SURE THAT THE POWER SUPPLY COMPLIES WITH LPS REQUIREMENTS. WHEN INSTALLING THE CAMERA, HOOK UP THE CAMERA WITH THE ANTI-DROP CHAIN OF THE PENDANT TO THE ANTI-DROP RING (SEE FIGURE 1). FOR MORE INFORMATION, CONTACT SIQURA..

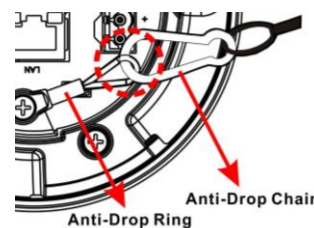


Figure 1 Position anti-drop ring and anti-drop chain

Connectors

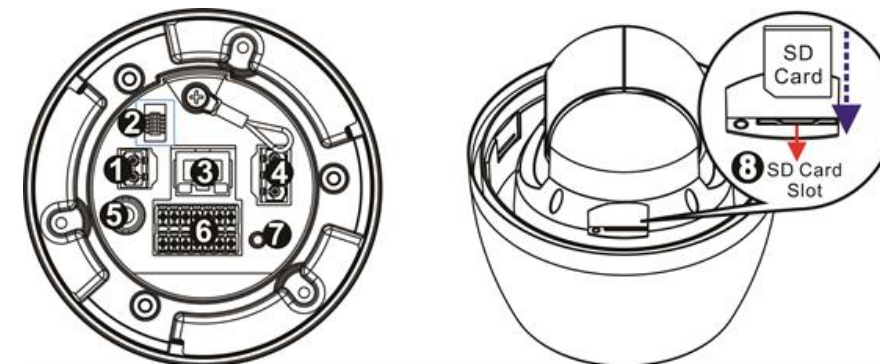


Figure 2 Camera Connectors

For the connector definitions, see table 1.



NOTE:
 IT IS NOT RECOMMENDED TO CONTINUOUSLY (24/7) RECORD WITH THE MICRO SD CARD, AS THE CAMERA MAY NOT SUPPORT LONG-TERM CONTINUOUS DATA READ/WRITE. CONTACT THE MANUFACTURER OF THE MICRO SD CARD FOR INFORMATION REGARDING THE RELIABILITY AND THE LIFE EXPECTANCY.

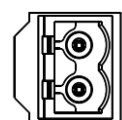
Connector Definition

No.	Connector	Definition
1	Power (DC12V)	DC12V power connection
2	Console Connector	This connector is used to burn firmware into the camera when the camera is returned for repair/maintenance. Please contact the camera manufacturer for further information.
3	RJ-45 Port (Contact Siqura for a compatible PoE injector.)	For network and PoE+ connections
4	Power (AC24V)	AC24V power connection
5	BNC	For analog video output
6	Audio/Alarm I/O & RS-485	Audio/Alarm I/O & RS-485 connection
7	Reset Button	Press the button with a proper tool for at least 20 seconds to restore the system.
8	SD Card Slot	Insert the SD card into the card slot to store videos and snapshots. Do not remove the SD card when the camera is powered on.

Table 1 Connector definitions

Camera Cabling (1)

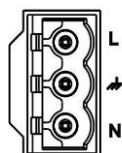
Power Connector (DC 12V)



Pin	Definition
1	DC12V +
2	DC12V -

Table 2 Pin definition for DC12V power connection

Power Connector (AC 24V)



Pin	Definition
1	AC24V L
2	GND
3	AC24V N

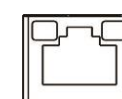
Table 3 Pin definition for AC24V power connection



POWER RATING OF PD900
 12VDC, 1.62A SHALL BE SUPPLIED BY POWER ADAPTER. 24VAC, 50-60Hz OR 50/60Hz, 0.67A SHALL BE SUPPLIED BY POWER ADAPTER. 55VDC, 0.39A SHALL BE SUPPLIED BY "POE".

Camera Cabling (2)

PoE and Ethernet cable connection



- The green link LED is lit when there is a good network connection.
- The orange network LED flashes to indicate that there is network activity.



NOTE:
 IN SOME CASES, AN ETHERNET CROSSOVER CABLE MAY BE NEEDED WHEN CONNECTING THE CAMERA DIRECTLY TO THE PC. CHECK THE STATUS OF THE LINK INDICATOR AND THE ACTIVITY INDICATOR LEDS. IF THE LEDS ARE UNLIT, CHECK THE LAN CONNECTION.



WARNING:
 FOR "PoE" INPUT CONNECTION, USE ONLY WITH UL LISTED I.T.E WITH "PoE" OUTPUT. DESCRIPTION FOR THE "PoE" IS INTENDED TO BE CONNECTED TO NOT EXPOSED (OUTSIDE PLANT) NETWORKS OR EQUIVALENT STATEMENT IN INSTALLATION INSTRUCTIONS.
 POUR LA CONNEXION D'À CÔTÉ "PoE", UTILISER UNIQUEMENT AVEC UN I.T.E. LISTE AVEC UNE SORTIE "PoE". LA DESCRIPTION DE "POE" EST CONÇUE POUR ÊTRE CONNECTÉE À DES RÉSEAUX OR NON ÉNONCÉS (INSTALLATIONS EXTÉRIEURES), DANS LES INSTRUCTIONS D'INSTALLATION DE L'INSTALLATION.

Audio/Alarm I/O and RS-485 connection

See the diagram and the pin definitions below for the Audio/Alarm I/O and RS-485 connection.

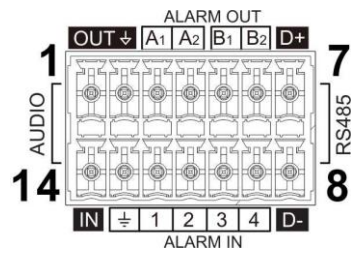
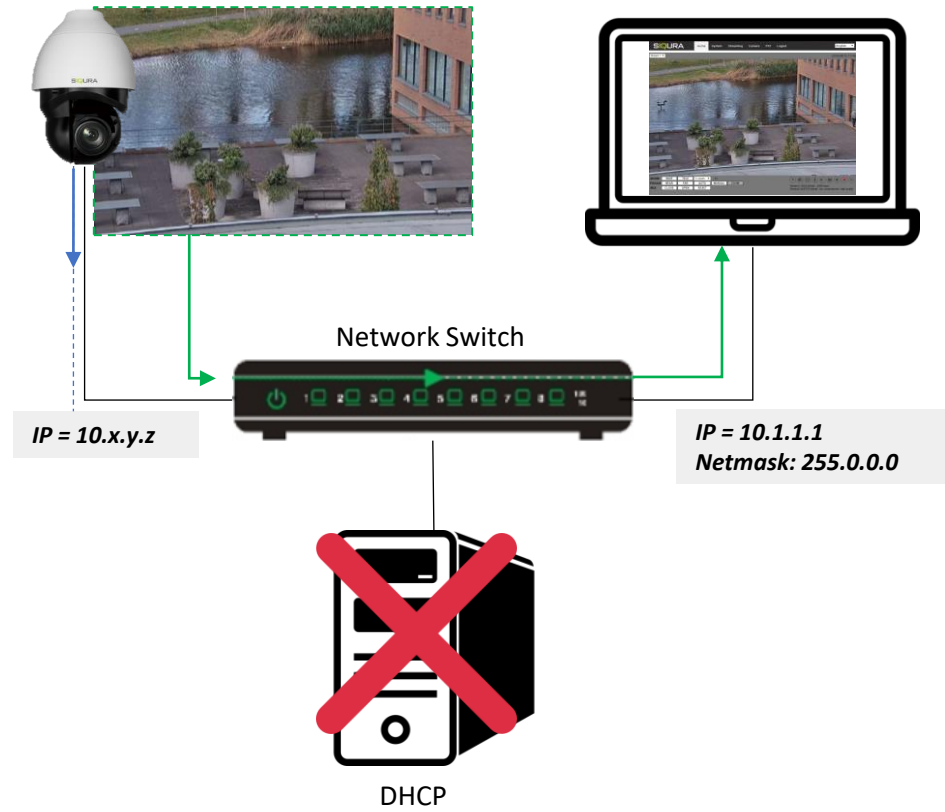


Figure 3 Diagram of Audio/Alarm I/O and RS-485 connection pins

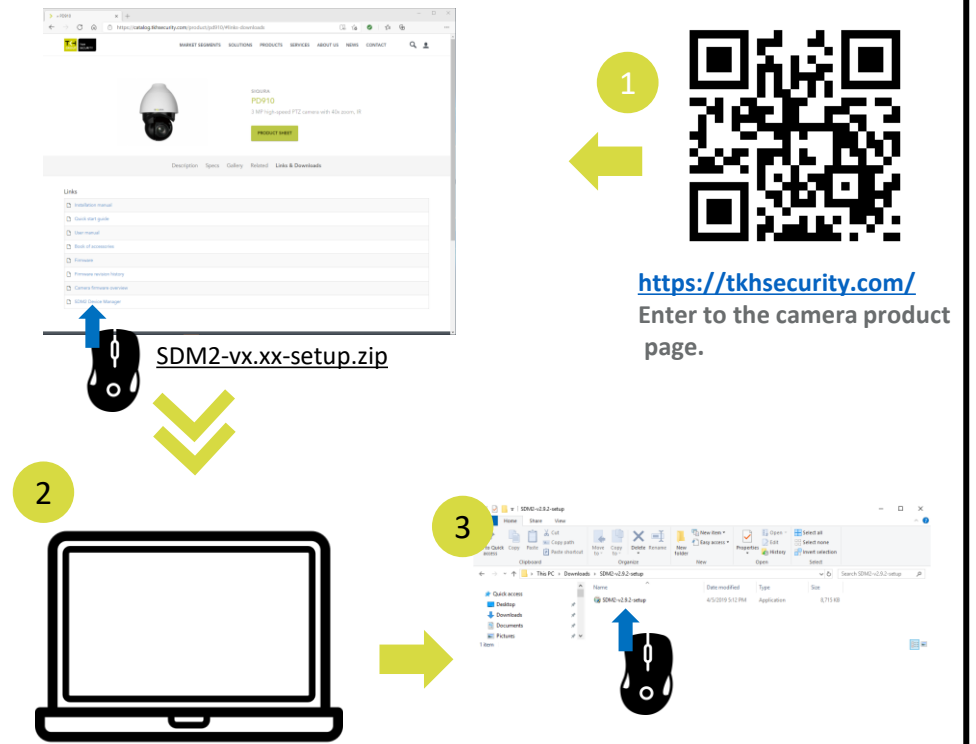
Pin	Definition	Pin	Definition
1	Audio Out	8	RS-485 D-
2	GND (Audio I/O)	9	Alarm In 4
3	Alarm Out A1	10	Alarm In 3
4	Alarm Out A2	11	Alarm In 2
5	Alarm Out B1	12	Alarm In 1
6	Alarm Out B2	13	GND (Alarm I/O and RS-485)
7	RS-485 D+	14	Audio In

Table 3 Pin definitions for Audio/Alarm I/O and RS-485 connection

Accessing the camera



Auto detect with SDM2



1st time camera login

Install browser-based viewer

Browser-based Viewer

Figure 4 shows the main page of the IP camera user interface.

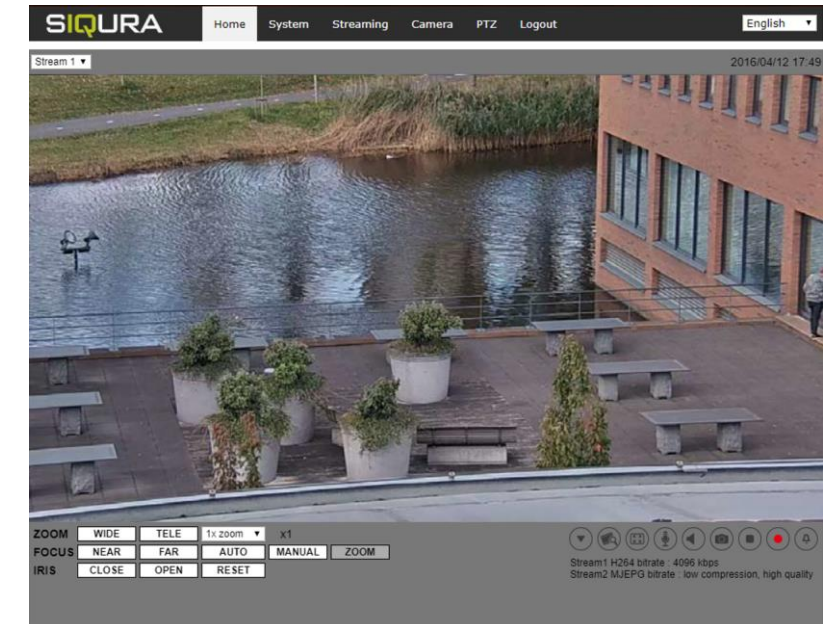


Figure 4 Main page IP camera user interface

Note 1: If the IE web interface is not showing video, you might need to open your firewall or set the OCX protocol to RTP-over-RTSP(TCP).