

# PD910

## 3MP Bubbleless Network PTZ Dome Camera

### Quick Start Guide



Find additional manuals, the datasheet, the EU Declaration of Conformity, and the latest firmware for this product at:

<https://tkhsecurity.com/>



### Unpack



PD910 Camera Unit

- M4 security screw with rubber
- 2-pin power terminal block(DC12V use)
- 3-pin power terminal block (AC24V use)
- 14-pin Alarm/Audio I/O terminal block
- Rubber Stopper
- Quick Start Guide

**Note 1:** Subject to modification. Actual product and accessories may differ in appearance.

### Installation Notices



**CAUTION:**  
 INSTALLATION SHALL BE PERFORMED BY QUALIFIED PERSONNEL ONLY. INSTALLATION SHALL BE IN ACCORDANCE WITH LOCAL PROCEDURES. INSTALLATION WITH POE SHALL BE IN UNEXPOSED NETWORKS. BATTERY REPLACEMENT SHALL NOT BE APPLIED IN VIEW OF THE RISK OF EXPLOSION.  
 IF YOU USE AN EXTERNAL POWER SUPPLY, CONTACT SIQURA TO MAKE SURE THAT THE POWER SUPPLY HAS THE PROPER POWER SPECIFICATIONS. MAKE SURE THAT THE POWER SUPPLY COMPLIES WITH LPS REQUIREMENTS. WHEN INSTALLING THE CAMERA, HOOK UP THE CAMERA WITH THE ANTI-DROP CHAIN OF THE PENDANT TO THE ANTI-DROP RING (SEE FIGURE 1). FOR MORE INFORMATION, CONTACT SIQURA.

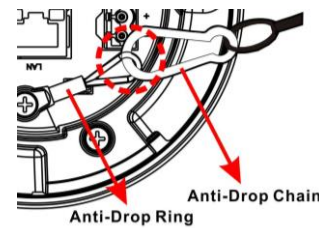


Figure 1 Position anti-drop ring and anti-drop chain

### Connectors

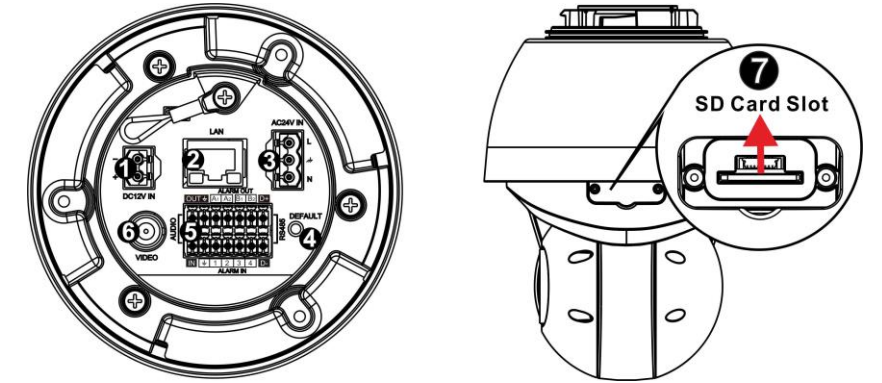


Figure 2 Camera Connectors

For the connector definitions, see table 1.



**NOTE:**  
 IT IS NOT RECOMMENDED TO CONTINUOUSLY (24/7) RECORD WITH THE MICRO SD CARD, AS THE CAMERA MAY NOT SUPPORT LONG-TERM CONTINUOUS DATA READ/WRITE. CONTACT THE MANUFACTURER OF THE MICRO SD CARD FOR INFORMATION REGARDING THE RELIABILITY AND THE LIFE EXPECTANCY.

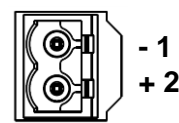
### Connector Definition

No.	Connector	Definition
1	Power (DC12V)	DC12V power connection
2	RJ-45 Port (Contact Siqura for a compatible PoE injector.)	For network and PoE+ connections
3	Power (AC24V)	AC24V power connection
4	Reset Button	Press the button with a proper tool for at least 20 seconds to restore the system.
5	Audio/Alarm I/O & RS-485	Audio/Alarm I/O & RS-485 connection
6	BNC	For analog video output
7	SD Card Slot	Insert the SD card into the card slot to store videos and snapshots. Do not remove the SD card when the camera is powered on.

Table 1 Connector Definition

### Camera Cabling (1)

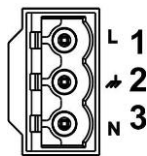
#### Power Connector (DC 12V)



Pin	Definition
1	DC12V -
2	DC12V +

Table 2 Pin definition for DC12V power connection

#### Power Connector (AC 24V)



Pin	Definition
1	AC24V L
2	GND
3	AC24V N

Table 3 Pin definition for AC24V power connection

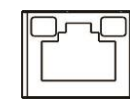


#### POWER RATING OF PD910

12VDC, 4.17A SHALL BE SUPPLIED BY POWER ADAPTER. 24VAC, 50-60Hz OR 50/60Hz, 2.09A SHALL BE SUPPLIED BY POWER ADAPTER. 55VDC, 0.91A SHALL BE SUPPLIED BY "POE".

### Camera Cabling (2)

#### PoE and Ethernet cable connection



- The green link LED is lit when there is a good network connection.
- The orange network LED flashes to indicate that there is network activity.



#### NOTE:

IN SOME CASES, AN ETHERNET CROSSOVER CABLE MAY BE NEEDED WHEN CONNECTING THE CAMERA DIRECTLY TO THE PC. CHECK THE STATUS OF THE LINK INDICATOR AND THE ACTIVITY INDICATOR LEDES. IF THE LEDES ARE UNLIT, CHECK THE LAN CONNECTION.



#### WARNING:

FOR "PoE" INPUT CONNECTION, USE ONLY WITH UL LISTED I.T.E WITH "PoE" OUTPUT. DESCRIPTION FOR THE "PoE" IS INTENDED TO BE CONNECTED TO NOT EXPOSED (OUTSIDE PLANT) NETWORKS OR EQUIVALENT STATEMENT IN INSTALLATION INSTRUCTIONS.

POUR LA CONNEXION D'ENTRÉE "PoE", UTILISER UNIQUEMENT AVEC UN I.T.E. LISTE AVEC UNE SORTIE "PoE". LA DESCRIPTION DE "POE" EST CONÇUE POUR ÊTRE CONNECTÉE À DES RÉSEAUX OR NON ÉNONCÉS (INSTALLATIONS EXTÉRIEURES), DANS LES INSTRUCTIONS D'INSTALLATION DE L'INSTALLATION.

## Audio/Alarm I/O and RS-485 connection

See the diagram and the pin definitions below for the Audio/Alarm I/O and RS-485 connection.

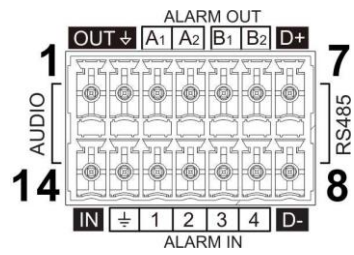
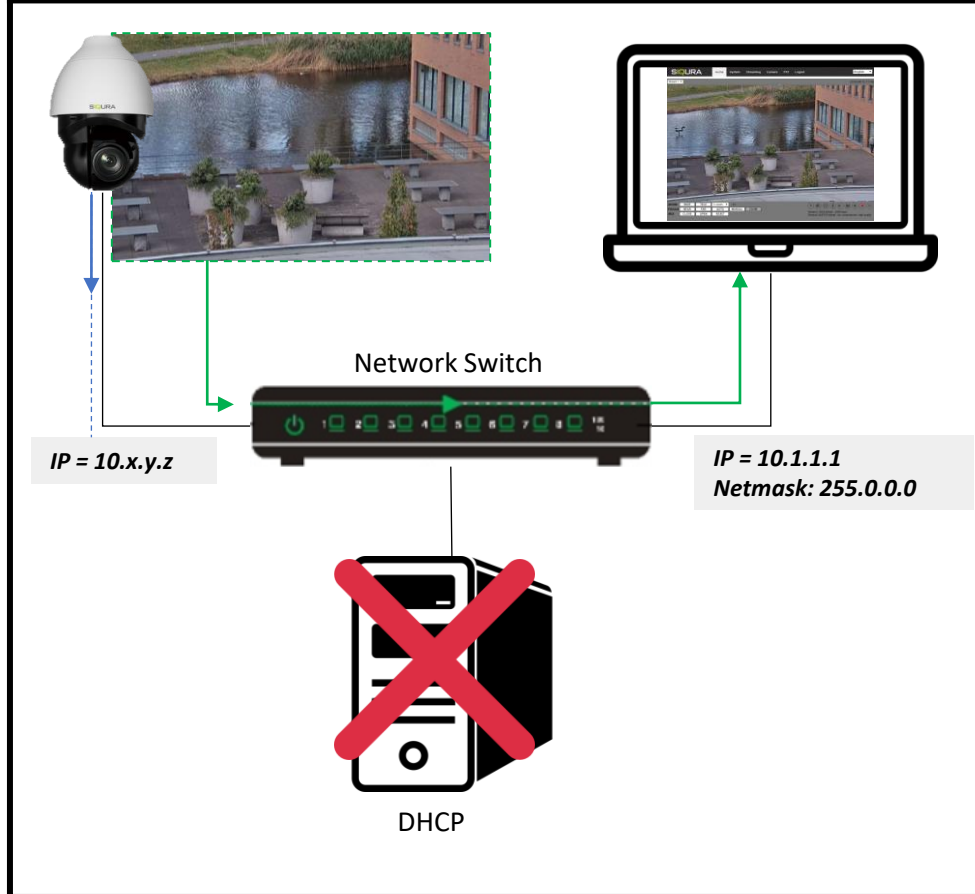


Figure 3 Diagram of Audio/Alarm I/O and RS-485 connection pins

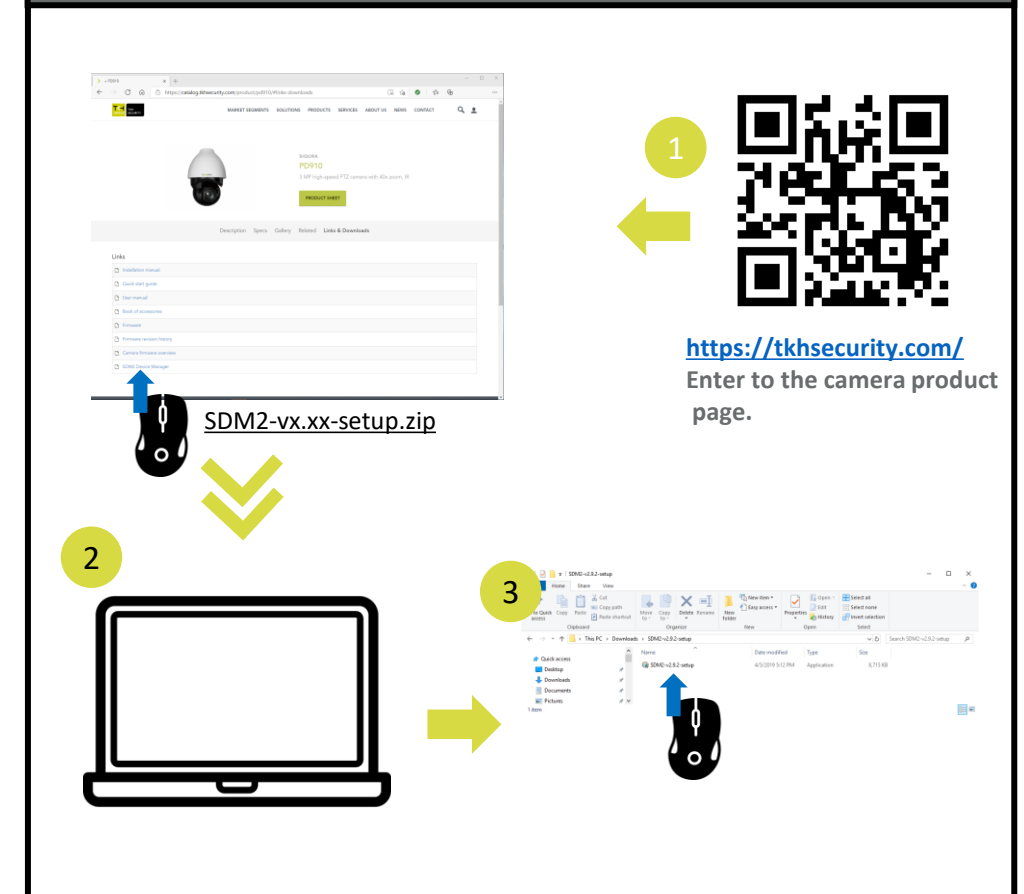
Pin	Definition	Pin	Definition
1	Audio Out	8	RS-485 D-
2	GND (Audio I/O)	9	Alarm In 4
3	Alarm Out A1	10	Alarm In 3
4	Alarm Out A2	11	Alarm In 2
5	Alarm Out B1	12	Alarm In 1
6	Alarm Out B2	13	GND (Alarm I/O and RS-485)
7	RS-485 D+	14	Audio In

Table 3 Pin definitions for Audio/Alarm I/O and RS-485 connection

## Accessing the camera



## Auto detect with SDM2



## 1<sup>st</sup> time camera login

## Install browser-based viewer

## Browser-based Viewer

Figure 4 shows the main page of the IP camera user interface.

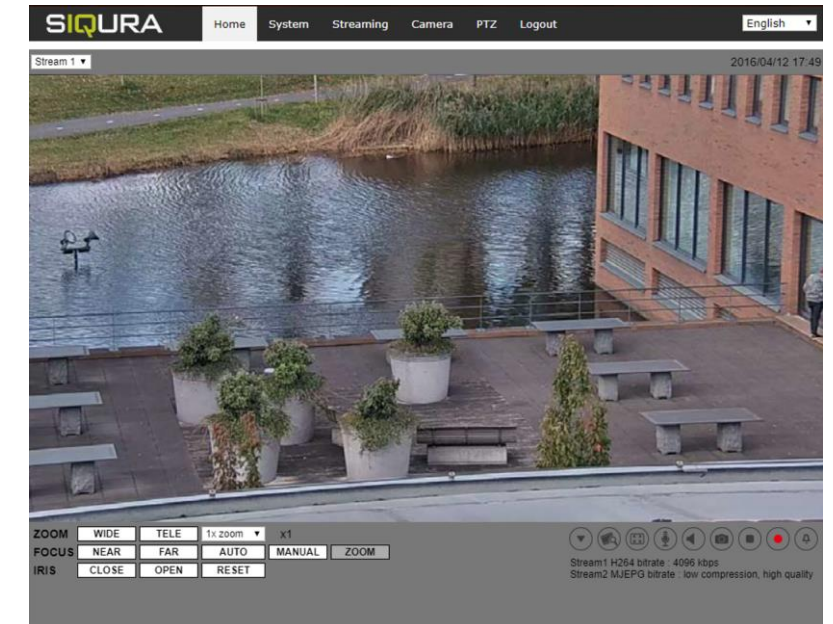


Figure 4 Main page IP camera user interface

**Note 1:** If the IE web interface is not showing video, you might need to open your firewall or set the OCX protocol to RTP-over-RTSP(TCP).