

FD1103MI-EI

3 MP Intelligent IP outdoor fixed dome camera with IR

Quick Start Guide



Find additional manuals, the datasheet, the EU Declaration of Conformity and the latest firmware for this product at:

<http://www.tkhsecurity.com/support-files>



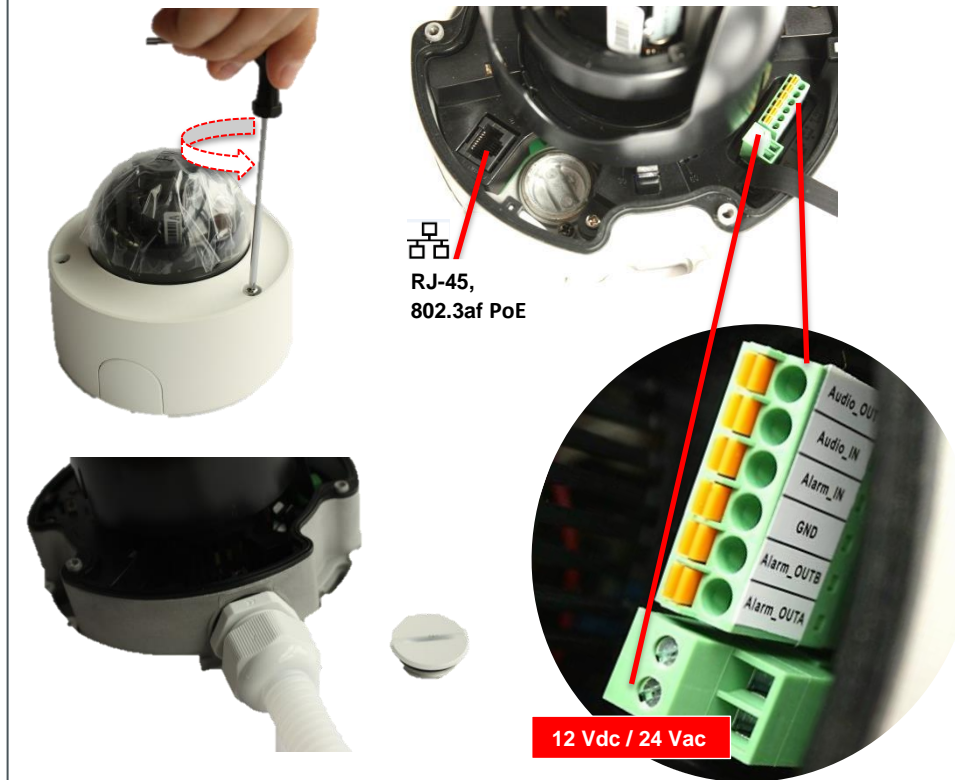
SECURITY SOLUTIONS

Unpack



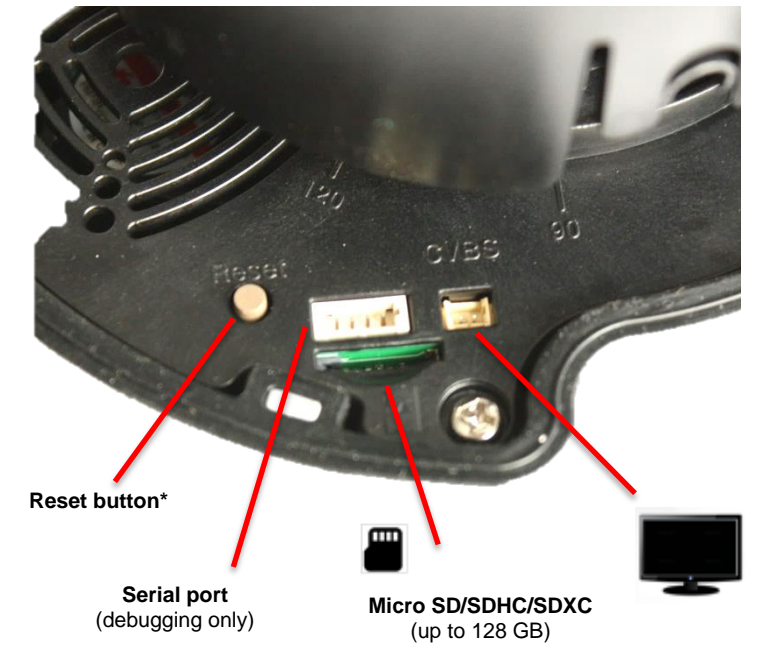
Note: Subject to modification. Actual product and accessories may differ in appearance.

Connect



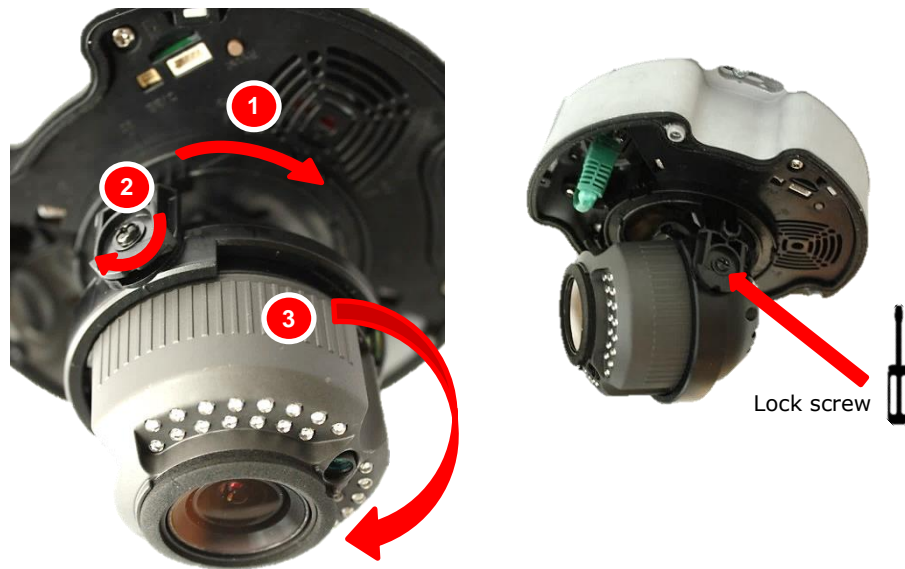
Use side conduit (optional)

Insert Micro SD card / Reset



***Reset button:** Press and hold for 10 sec. when powering on or rebooting.
Warning: Restores factory default settings, including IP address, user name and password!

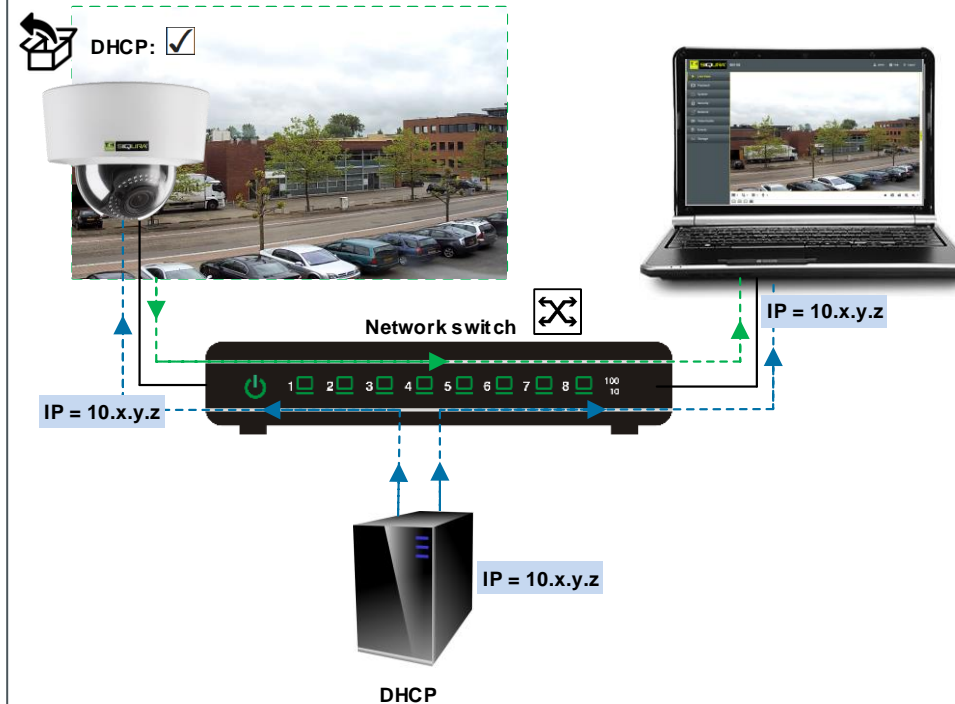
Point the lens



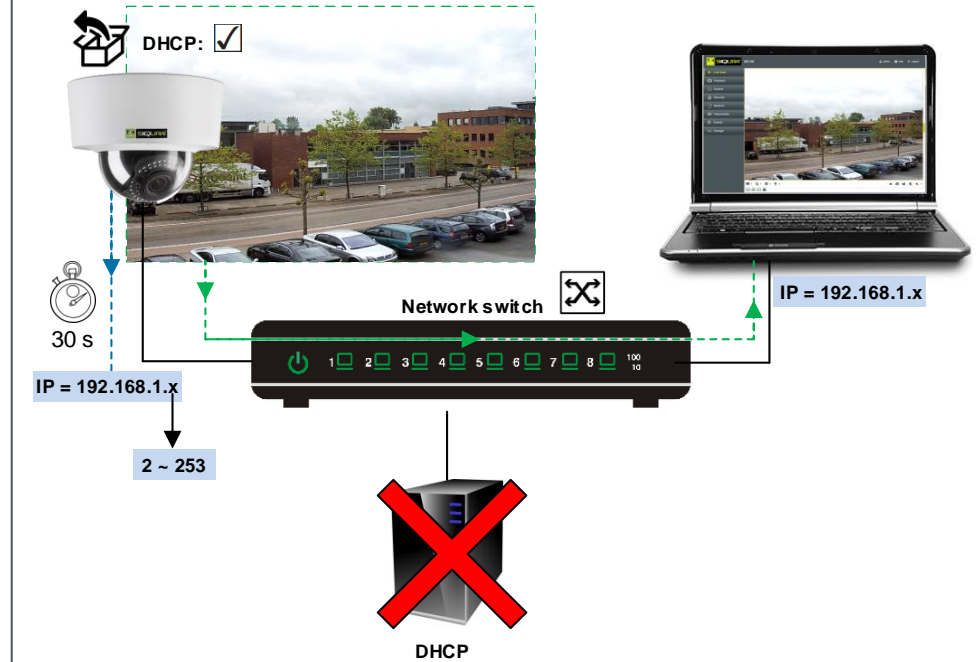
1. Pan
2. Tilt
3. Rotate

Note: For mounting instructions for pole mount or wall mount, see respective manuals.

Use DHCP server



Use fixed IP address



Note: Use Device Manager (see next) to discover the camera on the network.

Install Device Manager (optional)

1

2

3

support-files > Software > Siqura Device Manager

Important: 1103 series cameras require Device Manager version 1.8.1 or later. Replace an existing, older installation of this tool on your PC, if necessary.

Change IP address via Device Manager

1

2

3

Current IP address	Current Netmask	New IP address	New Netmask	New Gateway
192.168.1.148	255.255.255.0	172.22.250.138	255.255.0.0	0.0.0.0

Open web interface via Device Manager

1

2

Set password

Administrator / End User

Set a strong password!

qwerty1234

x6W@oM0a!9#F

Valid password range (8-16). You can use a combination of numbers, lowercase, uppercase and special character for your password with at least two kinds of them contained.

Note: For information about user accounts and passwords, see User Manual.

View live video

07-04-2016 Mon 13:54:19

Camera 01

Internet Explorer

Adjust zoom/focus

Focus -

Zoom -

Zoom +

Focus +

PTZ

Auxiliary focus (push to focus)